

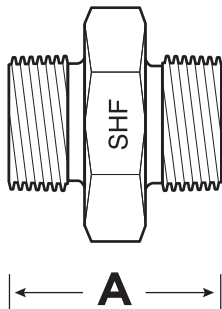
SHF Flat Face Adapters

O-Ring Face Seal - 316 Series

We stock 4 configurations of Flat Face (ORFS) Adapters in a range of sizing options. Additionally, we stock caps, plugs, braze sleeves and nuts for all your Flat Face Adapter needs. Our leak-free design is sure to keep you up and running.



FS2403 - Male O-Ring Face Seal Union - Straight



PART NO	MO-1	MO-2	THREAD-1	THREAD-2	A
FS2403-04-04	1/4	1/4	9/16-18	9/16-18	1.082
FS2403-06-06	3/8	3/8	11/16-16	11/16-16	1.220
FS2403-08-08	1/2	1/2	13/16-16	13/16-16	1.389
FS2403-10-10	5/8	5/8	1-14	1-14	1.681
FS2403-12-12	3/4	3/4	1 13/16-12	1 13/16-12	1.862
FS2403-16-16	1	1	1 7/16-12	1 7/16-12	1.940
FS2403-20-20	1 1/4	1 1/4	1 11/16-12	1 11/16-12	2.019



Also available

Crimp Fittings
Hydraulic Adapters
Weld-Ons
Push-Ons

Reusables
Ball Valves
Instrumentation Tube Fittings
Flange Adapters

Metric Tubing
Hose Barbs
Custom Fittings
Accessories

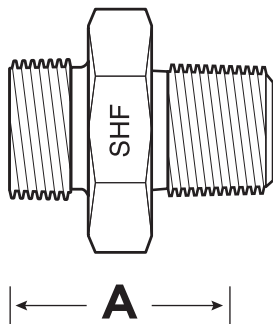
SHF Flat Face Adapters

O-Ring Face Seal - 316 Series

We stock 4 configurations of Flat Face (ORFS) Adapters in a range of sizing options. Additionally, we stock caps, plugs, braze sleeves and nuts for all your Flat Face Adapter needs. Our leak-free design is sure to keep you up and running.



FS2404 - Male O-Ring Face Seal x Male NPT Connector - Straight



PART NO	MO-1	MP-2	THREAD-1	THREAD-2	A
FS2404-04-04	1/4	1/4	9/16-18	1/4-18	1.259
FS2404-04-06	1/4	3/8	9/16-18	3/8-18	1.259
FS2404-06-04	3/8	1/4	11/16-16	1/4-18	1.338
FS2404-06-06	3/8	3/8	11/16-16	3/8-18	1.338
FS2404-06-08	3/8	1/2	11/16-16	1/2-14	1.551
FS2404-08-06	1/2	3/8	13/16-16	3/8-18	1.448
FS2404-08-08	1/2	1/2	13/16-16	1/2-14	1.637
FS2404-08-12	1/2	3/4	13/16-16	3/4-14	1.688
FS2404-10-08	5/8	1/2	1-14	1/2-14	1.818
FS2404-12-08	3/4	1/2	1 13/16-12	1/2-14	1.940
FS2404-12-12	3/4	3/4	1 13/16-12	3/4-14	1.940
FS2404-12-16	3/4	1	1 13/16-12	1 - 11 1/2	2.129
FS2404-16-12	1	3/4	1 7/16-12	3/4-14	2.000
FS2404-16-16	1	1	1 7/16-12	1 - 11 1/2	2.188
FS2404-16-20	1	1 1/4	1 7/16-12	1 1/4 - 11 1/2	2.229
FS2404-20-16	1 1/4	1	1 11/16-12	1 - 11 1/2	2.267
FS2404-20-20	1 1/4	1 1/4	1 11/16-12	1 1/4 - 11 1/2	2.303

Also available

Crimp Fittings
Hydraulic Adapters
Weld-Ons
Push-Ons

Reusables
Ball Valves
Instrumentation Tube Fittings
Flange Adapters

Metric Tubing
Hose Barbs
Custom Fittings
Accessories

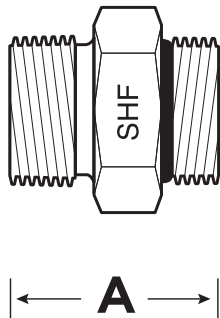
SHF Flat Face Adapters

O-Ring Face Seal - 316 Series

We stock 4 configurations of Flat Face (ORFS) Adapters in a range of sizing options. Additionally, we stock caps, plugs, braze sleeves and nuts for all your Flat Face Adapter needs. Our leak-free design is sure to keep you up and running.



FS6400 - Male O-Ring Face Seal x Male ORB Connector - Straight



PART NO	MO-1	MB-2	THREAD-1	THREAD-2	A
FS6400-04-04	1/4	1/4	9/16-18	7/16-20	1.113
FS6400-04-06	1/4	3/8	9/16-18	9/16-18	1.200
FS6400-06-04	3/8	1/4	11/16-16	7/16-20	1.342
FS6400-06-06	3/8	3/8	11/16-16	9/16-18	1.251
FS6400-06-08	3/8	1/2	11/16-16	3/4-16	1.381
FS6400-08-06	1/2	3/8	13/16-16	9/16-18	1.468
FS6400-08-08	1/2	1/2	13/16-16	3/4-16	1.440
FS6400-08-10	1/2	5/8	13/16-16	7/8-14	1.590
FS6400-08-12	1/2	3/4	13/16-16	1 1/16-12	1.748
FS6400-10-08	5/8	1/2	1-14	3/4-16	1.779
FS6400-10-10	5/8	5/8	1-14	7/8-14	1.700
FS6400-12-08	3/4	1/2	1 13/16-12	3/4-16	1.909
FS6400-12-12	3/4	3/4	1 13/16-12	1 1/16-12	1.917
FS6400-12-16	3/4	1	1 13/16-12	1 5/16-12	1.956
FS6400-16-12	1	3/4	1 7/16-12	1 1/16-12	2.137
FS6400-16-16	1	1	1 7/16-12	1 5/16-12	1.980
FS6400-16-20	1	1 1/4	1 7/16-12	1 5/8-12	2.059
FS6400-20-16	1 1/4	1	1 11/16-12	1 5/16-12	2.275
FS6400-20-20	1 1/4	1 1/4	1 11/16-12	1 5/8-12	2.059

Also available

Crimp Fittings
Hydraulic Adapters
Weld-Ons
Push-Ons

Reusables
Ball Valves
Instrumentation Tube Fittings
Flange Adapters

Metric Tubing
Hose Barbs
Custom Fittings
Accessories

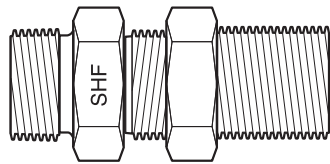
SHF Flat Face Adapters

O-Ring Face Seal - 316 Series

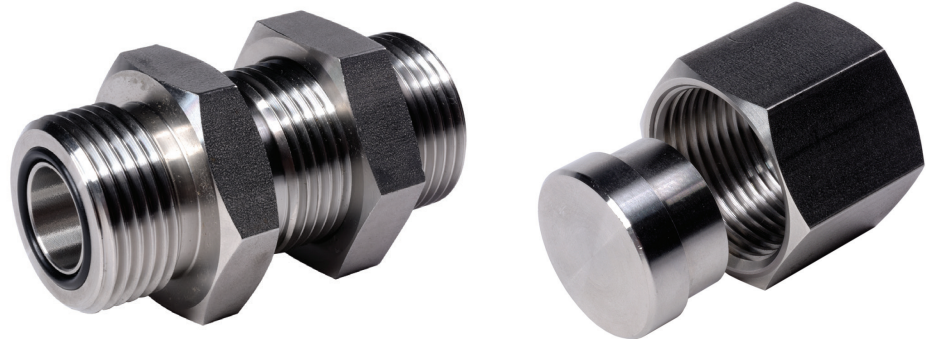
We stock 4 configurations of Flat Face (ORFS) Adapters in a range of sizing options. Additionally, we stock caps, plugs, braze sleeves and nuts for all your Flat Face Adapter needs. Our leak-free design is sure to keep you up and running.



FS2700 - O-Ring Face Seal Bulkhead with Lock Nut



PART NO	MO-1	MO-2	THREAD-1	THREAD-2	A
FS2700-04-04	1/4	1/4	9/16-18	9/16-18	1.897
FS2700-06-06	3/8	3/8	11/16-16	11/16-16	2.086
FS2700-08-08	1/2	1/2	13/16-16	13/16-16	2.299
FS2700-12-12	3/4	3/4	1 13/16-12	1 13/16-12	2.716
FS2700-16-16	1	1	1 7/16-12	1 7/16-12	2.759
FS2700-20-20	1 1/4	1 1/4	1 11/16-12	1 11/16-12	2.759



Also available

Crimp Fittings
Hydraulic Adapters
Weld-Ons
Push-Ons

Reusables
Ball Valves
Instrumentation Tube Fittings
Flange Adapters

Metric Tubing
Hose Barbs
Custom Fittings
Accessories